



# COMPETITIVE EXHIBITS GUIDE

---

# TABLE OF CONTENTS

Dates, Times, Schedule, Registration Information .....	1
General Rules, Judging and Awards .....	2
Department I: Food Preservation Only	
<i>(Honey &amp; Beeswax will return in 2022)</i> .....	3
Department II: Decorated Food Products and Baked Goods .....	3
Department III: Art Needlework and Wearing Apparel.....	4
Department IV: Crafts and Fine Arts.....	5
Department V: Photography.....	6
Department VI: Herbs, Fruits, Nuts and Vegetables .....	6-7
Department VII: Flowers, Arrangements and Potted Plants.....	7-8
(NEW) Department VIII: Educational Exhibits .....	9
2021 Competitive Exhibitor Entry Form .....	Online
2021 Competitive Exhibitor Entry Tags .....	Online

---

## Mission

The Arlington County Fair is a non-profit volunteer-driven organization that embraces a diverse community by educating, entertaining, and showcasing the best of Arlington.

## Volunteers

In addition to Board Members, Department Superintendents and Department Judges donate their time to help the event run smoothly. Department Superintendents are essential as they are able to manage and monitor the entries for Competitive Exhibits. If you would like to learn more about volunteer opportunities with Competitive Exhibits with the Fair, please contact us at [compexhibits@arlingtoncountyfair.us](mailto:compexhibits@arlingtoncountyfair.us).

## Access/Inclusion

The Arlington County Fair is committed to promoting participation by providing reasonable accommodations for individuals with disabilities, as described in the Americans with Disabilities Act, upon request. To make arrangements for access to Fair attractions and activities, please call the Fair (703-829-7471) no later than Friday, August 6, to make arrangements.

## 2021 Dates And Times

FAIR HOURS	INDOOR HOURS	OUTDOOR HOURS
WED, August 18	N/A	5:00 p.m. – 10:00 p.m.
THUR, August 19	N/A	5:00 p.m. – 10:00 p.m.
FRI, August 20	4:00 pm – 10:00 p.m.	2:00 p.m. – 11:00 p.m.
SAT, August 21	10:00 am – 9:00 p.m.	10:00 a.m. – 11:00 p.m.
SUN, August 22	11:00 am – 7:00 p.m.	11:00 a.m. – 10:00 p.m.

### COMPETITIVE EXHIBITS SCHEDULE

CE Registration	Wednesday, August 18, 4:00 p.m. – 8:00 p.m. Thursday, August 19, 7:30 a.m. – 9:30 a.m. <i>(only for perishable items; Departments I, II, VI, VII)</i>
Awards Ceremony	Saturday, August 21, 7:00 p.m.
Pick-up Entries	Sunday, August 22, 3:30 p.m. – 6:00 p.m. <i>(Due to breakdown we are not able to hold or store any entries after 6pm)</i>

## Competitive Exhibits Registration

Register online and bring your entries following these guidelines:

1. Entries will be accepted on Wednesday, August 18 from 4:00 p.m. to 8:00 p.m. PERISHABLE ITEMS (BAKED GOODS, FLOWERS, PLANTS AND VEGETABLES) WILL BE ACCEPTED ON THURSDAY, AUGUST 19 FROM 7:30 A.M. TO 9:30 A.M. PERISHABLE ITEMS INCLUDE ENTRIES FROM DEPARTMENTS I, II, VI, AND VII. Please bring your entries to the gym at Thomas Jefferson Community Center, 3501 Second Street South. If you plan on entering many items in one Department (e.g. over 5 flowers) we request that you bring them in early Wednesday evening.
2. LATE ENTRIES WILL NOT BE ACCEPTED. THERE WILL BE NO EXCEPTIONS.
3. All entries must be tagged, recorded, and checked-in with the proper Department Superintendent before exhibitor may leave. Exhibitor cannot rearrange entry after it is placed.
4. Exhibitors should write a brief description of each item on the back of the Claim Check attached to the Entry Tag, and retain the Claim Check in a secure location. Claim Check must be presented at close of Fair to reclaim entries. All of this is now part of the ONLINE Registration: form, tag, and exhibitor number.
5. Another individual may submit entries on your behalf if you are unavailable during the registration time frame. Please ensure that you have filled out the registration form and entry tag(s) completely in advance.
6. Due to high volume, Department V Photography, will apply a maximum of three (3) prints total per individual. One person is permitted to enter no more than 3 entries in Photography.

## Registration Forms & Entry Tags

The Fair's Competitive Exhibit Entry Form is available ONLINE on the Fair website ([arlingtoncountyfair.us](http://arlingtoncountyfair.us)). If for whatever reason you are not able to register through our ONLINE format, please call 703-829-7471 for instructions. Each exhibitor must fill out this form listing all entries submitted by the exhibitor. You will be given an exhibitor number to match with your registration upon submission.

AN EXHIBITOR NUMBER WILL BE ASSIGNED TO YOU DURING REGISTRATION. WRITE YOUR EXHIBITOR NUMBER ON EACH ENTRY TAG. YOU MAY ENTER MORE THAN ONE ENTRY, BUT YOU WILL HAVE ONLY ONE EXHIBITOR NUMBER. COMPETITIVE EXHIBIT ENTRY TAGS MUST BE ATTACHED TO EACH ENTRY IN ORDER TO BE PRESENTED FOR JUDGING.

## Entry Pick-Up

All entries must remain at the fair until after the Saturday evening awards ceremony. There will be no exceptions. Official entry pick-up time is Sunday, between 3:30 p.m. and 6:00 p.m. Please arrange for someone else to pick up if you are unavailable. Claim Checks will be required at pick-up to verify items go home with the correct owner. Entries not picked up by 6:00 p.m. Sunday, August 16 will be recycled, discarded, or donated. No exceptions.



## General Rules

Participants must read and abide by the following rules in order to enter items in the Arlington County Fair. There will be volunteers on hand at registration to help you should you need assistance. If you have any questions before the Fair, please email [compexhibits@arlingtoncountyfair.us](mailto:compexhibits@arlingtoncountyfair.us) with a detailed message and we will forward your question to the correct Superintendent. Please note that departments may have additional rules that apply specifically to their area. All rules should be reviewed prior to registration. It is the duty of the entrant to ensure compliance with all rules, including those pertaining to area of residence and listed throughout the guide. Entries that do not comply may be disqualified at any point or an award may be revoked due to a rule violation.

1. Entries will only be accepted from residents of Arlington County, Joint Base Myer-Henderson Hall, the City of Alexandria, and the City of Falls Church and students who attend schools in Arlington County.
2. Items to be entered must have been baked, made, or grown solely by the individual who enters; this includes children's entries.
3. Items may only be entered in the specific classes listed in this Guide. Most Departments have an "Exhibitor's Choice" Class for those items that do not fit the given classes.
4. Each exhibitor may only enter one item per class.
5. No entries may be sold at the Fair, nor may any "professional" (one who accepts remuneration for the design of, or finished work, or who teaches that subject) enter. Individuals who sell their products at the Arlington County Fair are not permitted to enter that product.
6. No entries will be accepted for display only.
7. The Fair reserves the right to refuse items deemed unfit or objectionable.
8. Items must not have been entered in a previous Arlington County Fair.
9. Reasonable security will be taken to safeguard entries; however, it is expressly understood and agreed between the exhibitor and the Arlington County Fair that the Fair will incur no liability or obligation for damages or loss of property (entries). Any insurance desired on any entry must be carried by the exhibitor.
10. Please follow size limits, quantities needed, and other Department specific rules as listed. Items not conforming to these specific Department/Section/Class rules will be disqualified – if you have a question, ask a Superintendent.
11. Exhibitors must enter in the proper age Division, or they will be disqualified. For Teen and Youth, please write the exact age after the Division letter on the entry tags. It is very important for the judges to have this information.
12. Please place the entry tag on the top right corner of the entry, unless there is a more visible and appropriate placement.

## Judging

1. Decisions of the judges are final. All judges are certified and/or highly qualified.
2. Where there is no competition in a class, Section or Department, judges reserve the right to award the ribbon they feel is merited.

3. Entries improperly tagged or not conforming to class and/or departmental rules may be disqualified.
4. Superintendents and judges reserve the right to combine or separate similar classes.
5. Each Department has a "Judging is based upon" statement; if you have questions, please ask.
6. Notwithstanding a judge's decision, an entry will be disqualified and an award not given if the entrant is not in compliance with the rules regarding residence.

## Explanation of Terms

An "Exhibitor" is the person who enters something in a "Class" (listed as a three or four-digit number), under a "Section" in a "Department." For example, to enter green beans, use Department VII: Herbs, Fruits, Nuts and Vegetables, under SECTION D: VEGETABLES, Class #1048. Look for an amount after the class description – e.g. "Class #735 Beans, Green, Snap, 8 pods." This means you must bring eight green beans to enter. "Division" is a letter, designating your age group. These are listed below.

**DIVISION G: ADULT**

**DIVISION T: TEEN (13 TO 17)**

**DIVISION Y: YOUTH (7 TO 12)**

**DIVISION K: CHILD (6 AND UNDER)**

## Sample Form

DEPT.	DIVISION	SECTION	CLASS #	ITEM DESCRIPTION
IV	G	A	503	Wooden Spoon

## Awards

**CLASS AWARDS:** Premium Ribbons will be awarded in each class, in each age division (e.g. "A," for Adult) by judges as merited.

**SECTION AWARDS:** A Champion ribbon and a Reserve Champion may be awarded in each age division in each Section (e.g. SECTION A: SINGLE FLOWERS) by judges as merited. These are chosen from the blue-ribbon winners of the classes in that Section. Group entries are not eligible for Section or Department awards.

**DEPARTMENT AWARDS:** A Grand Champion ribbon and a Reserve Grand Champion ribbon will be awarded in each Department in each age division by judges as merited. Grand Champions and Reserve Grand Champions are chosen from the Champion Section awards. In addition, Grand Champion and Reserve Grand Champion winners in all the age divisions will receive cash awards and certificates at an Awards Ceremony. The Ceremony is scheduled for Saturday, August 22 at 7:00 p.m. All Grand and Reserve Grand Champion award winners are encouraged to attend.

**THEME AWARDS:** An award for the "NIGHTS, LIGHTS, and BITES" theme is possible in each Department and Class.

## DEPARTMENT I: FOOD PRESERVATION *(HONEY AND BEESWAX HOPE TO RETURN IN 2022)*

### Rules:

1. PLEASE READ AND FOLLOW ALL GENERAL RULES AT THE BEGINNING OF THIS GUIDE.
2. Containers: All jars must be clear glass, standard canning for all entries, except vinegar. Rings and lids must be free of rust. NO OTHER JARS WILL BE ACCEPTED.
3. Seals: All entries must be sealed with two-piece commercial lids. Leave rings on. Paraffin is NOT acceptable. Judges cannot risk sampling entries whose seals appear faulty.
4. Labels: Label the side of the jar, stating date made and type of product (e.g., August 5, 2020 – Raspberry Jam). Canning must be since the last Fair, and have been made by the exhibitor. Please indicate if your entry is made from homegrown fruits, vegetables or herbs. Please

clearly label Exhibitor's Choice Products, indicating major ingredients. A label reading "Grandma's Spring Preserves" isn't much help even though it has had that name for five generations!

5. Canned fruits and vegetables are judged without opening the jar. All other entries are opened by the judges for taste testing.
6. Jams and jellies MUST be made from fresh fruits and/or herbs.
7. No artificial coloring may be used in any entry.
8. No freezer products are permitted.

### Judging Based Upon:

Judges will be looking for clean, perfectly sealed regulation jars; fullness of the jar; uniformity, size, shape and color of the product; clear liquids, no sediment or

cloudy; deep, true colors; proper consistency of jellies and jams; clarity of jellies; crispness or firmness of pickled products; well-developed flavors in taste-tested products.

### SECTION A: JAMS

- 117 Apple
- 118 Berry
- 119 Cherry
- 120 Grape
- 121 Peach
- 122 Exhibitor's Choice

### SECTION B: JELLIES

- 123 Apple
- 124 Berry
- 125 Cherry
- 126 Grape
- 127 Peach
- 128 Exhibitor's Choice

### SECTION C: PICKLES AND RELISHES

- 129 Sweet Pickles

- 130 Dill Pickles
- 131 Bread & Butter Pickles
- 132 Vegetable Pickles, no cucumber
- 133 Fruit Pickles (spiced fruit)
- 134 Exhibitor's Choice

### SECTION D: SAUCES AND SALSAS

- 135 Corn relishes
- 136 Chutney
- 137 Catsup
- 138 Barbeque Sauce
- 139 Spaghetti sauce
- 140 Salsa, please identify
- 141 Exhibitor's Choice

### SECTION E: CANNED FRUITS AND VEGETABLES

- 142 Fruit
- 143 Vegetables
- 144 Exhibitor's Choice

### SECTION F: FAIR THEME

- 145 "Nights, Lights, and Bites"

## DEPARTMENT II: DECORATED FOOD PRODUCTS AND BAKED GOODS

### Rules:

1. PLEASE READ AND FOLLOW ALL GENERAL RULES AT THE BEGINNING OF THIS GUIDE.
2. To ensure peak flavor and freshness, we recommend that Baked Goods entries be brought in Thursday morning, August 19, between 7:30 and 9:30 a.m. Baked goods are also accepted on Wednesday evening but not recommended.
3. All entries must be on white disposable plates or a cardboard base covered with white paper (no more than 2" larger than the entry) except for pies which must be in a disposable aluminum pan.
4. A copy of the recipe neatly printed or typed on a 3" x 5" card, (with Exhibitor's entry number on it) must accompany each entry.
5. No item that requires

refrigeration (e.g. cream cheese, whipped topping) will be allowed.

6. Decorated cakes (whole) are to remain for the duration of the Fair. Only the decorations will be judged. Exhibit half of cut cake or pie, leaving cut surface exposed. DO NOT cut decorated cakes. After judging, a section of the item will be on display.
7. Following judging Baked Goods will be left exposed for viewing by attendees to the Fair rendering them unsafe/unacceptable for consumption; accordingly, they will be destroyed at the end of the Fair. Awards and comment cards must be picked up by 6:00 p.m. on Sunday, August 22nd.

### Judging Based Upon:

- 50 points Flavor
- 25 points Appearance
- 25 points Texture

### SECTION A: BREAD

- 200 Yeast Bread
- 201 Quick Breads
- 202 Biscuits (6)
- 203 Cornbread
- 204 Muffins (6)
- 205 Other
- 206 Exhibitor's Choice

### SECTION B: CAKES

- 207 Angel Food
- 208 Carrot
- 209 Chocolate
- 210 Fruit
- 211 Pineapple Upside Down
- 212 White
- 213 Yellow
- 214 Pound
- 215 Cheesecake
- 216 Cupcakes (6)
- 217 Other
- 218 Exhibitor's Choice

### SECTION C: PIES

- 219 Fruit
- 220 Pecan
- 221 Pumpkin
- 222 Chocolate
- 223 Exhibitor's Choice

### SECTION D: COOKIES

- 224 Bar
- 225 Brownies
- 226 Chocolate Chip
- 227 Holiday
- 228 Cookies, plain or with nuts
- 229 Gingerbread Cookies
- 230 Oatmeal or Cereal
- 231 Peanut Butter
- 232 Unbaked
- 233 Exhibitor's Choice

### SECTION E: CANDY

- 234 Caramels
- 235 Fudge
- 236 Brittle
- 237 Toffee
- 238 Exhibitor's Choice

### SECTION F: DECORATED CAKE

- 239 Non-Professional
- 240 Exhibitor's Choice

### SECTION G: MIX

- 241 Any item made with creative use of mix
- 242 Gingerbread House

### SECTION H: FAIR THEME

- 243 "Nights, Lights, and Bites"

# DEPARTMENT III: ART NEEDLEWORK AND WEARING APPAREL

## Rules:

1. PLEASE READ AND FOLLOW ALL GENERAL RULES AT THE BEGINNING OF THIS GUIDE, unless the specific instructions for this Department that follow are different.
2. Any item made from a kit (pattern and materials pre-assembled), must be marked with K preceding the class number. Any item designed by the exhibitor (not according to a published pattern) may be marked with O before the class number. For items made following a pattern do not add a letter before the class number.
3. The item should have been completed no earlier than two years before the fair.
4. Entries must be clean, free from any soil or pet hair.
5. For items in Section C – Fiber Arts, provide a sufficient sample to display variations in color and texture (suggested one skein for yarn).
6. In general exhibitors may enter only one item in each class. An exception is made for Section C and D only. Exhibitors may enter up to three items of different types in each class in these Sections. Section C has very broad classes and Section D consolidates several fine needlework categories which previously had multiple sections. Multiple items must be of different types, for example one needlepoint pillow and one needlepoint framed picture, or one skein of double ply worsted and one of single ply fingering weight yarn, or one block print and one batik fabric.

## Judging Based Upon:

Design and pattern, workmanship, degree of difficulty, use of colors, use of materials, and overall appearance.

### SECTION A: KNITTING

- 300 Baby Blanket
- 301 Afghan/bedspread/tablecloth
- 302 Multi-piece set (including at least 2 related small items, e/g/ baby set, hat and scarf, scarf and gloves)
- 303 Dress or coat
- 304 Outfit for baby or young child (e.g. dress, romper, top and pants)
- 305 Socks
- 306 Hat
- 307 Mittens or gloves
- 308 Scarf
- 309 Sweater (infant or child)
- 310 Sweater or vest – short sleeved or sleeveless
- 311 Sweater – Cardigan
- 312 Sweater – Pullover
- 313 Shawl/Cape/Capulet/ Shrug/Poncho
- 314 Felted item (bag, hat, other item)
- 315 Holiday decoration
- 316 Toy, doll or Stuffed animal
- 317 Exhibitor's Choice (Item not listed above)

### SECTION B: CROCHETING

- 318 Baby Blanket
- 319 Afghan/bedspread/ tablecloth
- 320 Multi-piece set (including at least 2 related small items, e/g/ baby set, hat and scarf, scarf and gloves)
- 321 Wearing apparel (adult or teen)
- 322 Wearing apparel (infant or child)
- 323 Bag
- 324 Collar or other worn accessory
- 325 Hat
- 326 Scarf
- 327 Shawl/Cape/Capulet/ Shrug/Poncho
- 328 Pillow
- 329 Placemat or doily
- 330 Holiday decoration
- 331 Toy, doll or stuffed animal
- 332 Exhibitor's Choice (item not listed above)

### SECTION C: FIBER ARTS

*Note: Depending on the number of entries, the judges may group entries into multiple classes and or sections for purpose of awards. Provide a sufficient quantity for judges to evaluate workmanship – suggested*

*skein of at least 25 yards for yarn or a length of fabric adequate to display the dyeing technique.*

- 333 Spinning (Specify materials and technique)
- 334 Hand dyed yarn (Specify materials and techniques)
- 335 Hand dyed or printed fabric (Note: tie-dyed tee shirts should be entered in Department IV)
- 336 Completed item made from materials spun and/or dyed by exhibitor (for example an item knit, crocheted or woven from dyed yarn or sewn of fabric dyed by the exhibitor.)
- 337 Exhibitor's choice – Fiber art technique not specified above

### SECTION D: FINE NEEDLEWORK

*Note: Depending on the number of items entered in each class, the judges may group entries into multiple classes and or sections for purpose of awards.*

- 338 Lace and Tatting (specify technique on entry tag)
- 339 Needlepoint (any item)
- 340 Crewel Embroidery (any item)
- 341 Counted Thread/counted cross stitch (specify technique on entry tag)
- 342 Embroidery/ surface stitching – using silk and/ or cotton floss (any item)
- 343 Exhibitor's choice – fine needlework technique not specified above

### SECTION E: QUILTING

- 344 Apparel
- 345 Hand applique quilt – quilted by exhibitor
- 346 Machine applique quilt – quilted by exhibitor
- 347 Applique quilt – commercially quilted
- 348 Miniature quilt or doll quilt (30" by 30" or less and blocks of 3" or less)
- 349 Bed Quilt – pieced and quilted by exhibitor, Hand quilted
- 350 Bed Quilt – pieced and quilted by exhibitor, Machine quilted
- 351 Bed Quilt – pieced and

- quilted by exhibitor – Longarm machine quilted
- 352 Bed Quilt – pieced by exhibitor, quilted by another person or company
- 353 Pillow (any technique)
- 354 Table runner/placemat (any technique)
- 355 Wall hanging/lap quilt (specify on tag whether quilted by exhibitor)
- 356 First Quilt (for beginners just completing their first quilt)
- 357 Group Quilt – (not eligible for Section awards)
- 358 Holiday decoration
- 359 Accessory (e.g. bag)
- 360 Exhibitor's Choice (May include combination of techniques listed above – specify on entry tag)

### SECTION F: MIXED MEDIA

- 361 Braided rug
- 362 Hooked rug, pillow or wall hanging (made with crochet hook)
- 363 Latch Hook rug, pillow or wall hanging
- 364 Loom-Woven item
- 365 Punch Needle item
- 366 Exhibitor's Choice – technique not listed above

### SECTION G: SEWING

- 367 Active sports clothing – Men or women
- 368 Women's clothing – day wear
- 369 Men's clothing – day wear
- 370 Infant or children's clothing
- 371 Formalwear
- 372 Costume (Halloween, square dance, ballet, period, etc.)
- 373 Lingerie or sleepwear
- 374 Outdoor wear (coat, vest, parka, etc.)
- 375 Tailored garment
- 376 Sewn Accessories (purse, hat, apron, etc.)
- 377 Sewn item other than wearing apparel (e.g. curtains, baby items)
- 378 Sewn doll, toy, or stuffed animal
- 379 Exhibitor's Choice – items not listed above

### SECTION H: FAIR THEME

- 380 "Nights, Lights, and Bites"

# DEPARTMENT IV: CRAFTS & FINE ARTS

## Rules:

1. PLEASE READ AND FOLLOW ALL GENERAL RULES AT THE BEGINNING OF THIS GUIDE.
2. No entry may be larger than 36" x 24" due to space limitations.
3. All entries must be ready to display, with hangers if meant to be hung, or on a base, easel or stand if meant to stand on a surface.
4. For paintings and fine arts, all entries must be ready to display in a mat with backing board or frame or on a base or stand if meant to stand alone. All pieces to be hung must have an attached wire or hanging equipment ready to hang. Push pins may be used. Efforts to avoid damage will be made.
5. Please attach entry tag so that the tag hangs over the top right-hand corner. Indicate the top of the artwork with an arrow on the back.
6. Items made from kits or adapted designs (e.g. charts or patterns) must be designated on the entry tag with a "K" (kit) or "A" (adapted) before the class number.
7. All ceramic entries MUST be kiln fired and size may not exceed 18" x 24".
8. Only 3 pieces of a set may be entered and must be firmly secured together with clear or masking tape, and all lids and loose parts must be securely affixed by tape, either masking or clear.
9. No dry footing. Pieces must be completed on the back or bottom.
10. No props (such as candles, flowers, or plants) are allowed.
11. All entries must be original, no copies and no paint by numbers.
12. Entries must be finished – no wet paintings please!

## Special Rules for SCRAPBOOKING:

- a. Entries may be of any scrapbook album style from which individual pages can be removed; album page maximum size 12" x 12".
- b. An entry is an individual page – the exhibitor must remove individual page from the album – no pages still in an album/binder/book will be accepted. If the page is complete on both sides, the exhibitor MUST cover the side not being judged. NO two-page spreads or multiple sheets will be considered for judging.
- c. Commercially designed and produced "theme" pages are NOT allowed.
- d. Techniques and tools (stamped designs, decorative punches, embossing, computer

"handwriting" and/or art, hand coloring of photos, etc.) will be allowed, but are expected to enhance the photographs, journaling, and memorabilia.

- e. Pictures/photographs and memorabilia MUST be attached to an actual scrapbook page.
- f. Entries must NOT have been published or displayed in any magazine, idea book, or website. It is the responsibility of the exhibitor to obtain permission to use any copyrighted material (including, but not limited to, poetry or writings, photographs, graphic designs, or artwork).

## Judging Based Upon:

Color and design, workmanship, use of materials, overall appearance, and creativity. As well as craftsmanship, color harmony/contrasts, originality, choice of design and adaptability, technique and use of materials, and composition.

## SECTION A: FINE ARTS

- 400 Painting, Acrylic
- 401 Painting, Oil
- 402 Aqua Media (Watercolor/Tempera Gouache/Brushed Ink)
- 403 Drawing (Charcoal/Pencil/Ink/Crayon)
- 404 Pastels (Soft/Oil/Semi-hard)
- 404 Mixed Media
- 405 Metal Sculpture
- 406 Wood Sculpture
- 407 Stonework Sculpture
- 408 Clay Sculpture
- 409 Glass Sculpture
- 410 Mixed Media
- 411 Models (cars, planes, etc.)
- 412 Exhibitor's Choice

## SECTION B: PRINTMAKING

- 413 Relief: includes Woodcut/Linoleum cut
- 414 Intaglio: Engraving/Etching
- 415 Lithography
- 416 Silk Screening
- 417 Exhibitor's Choice

## SECTION C: PAPER BASED ARTICLE

- 418 Origami
- 419 Papier-mâché
- 420 Cards/Stamping
- 421 Exhibitor's Choice

## SECTION D: JEWELRY

- 422 Metalsmithing (brass/copper/sterling silver/gold/stone)
- 423 Beadwork (sewn/woven/strung)
- 424 Hand-made beads (glass/clay/metal)

- 425 Recycled jewelry
- 426 Exhibitor's Choice

## SECTION E: SCRAPBOOKING

- 427 Celebration of an Event (Birthday, Wedding, Holiday, etc.)
- 428 Vacation/Travel
- 429 Pets/Nature
- 430 Exhibitor's Choice

## SECTION F: CERAMICS

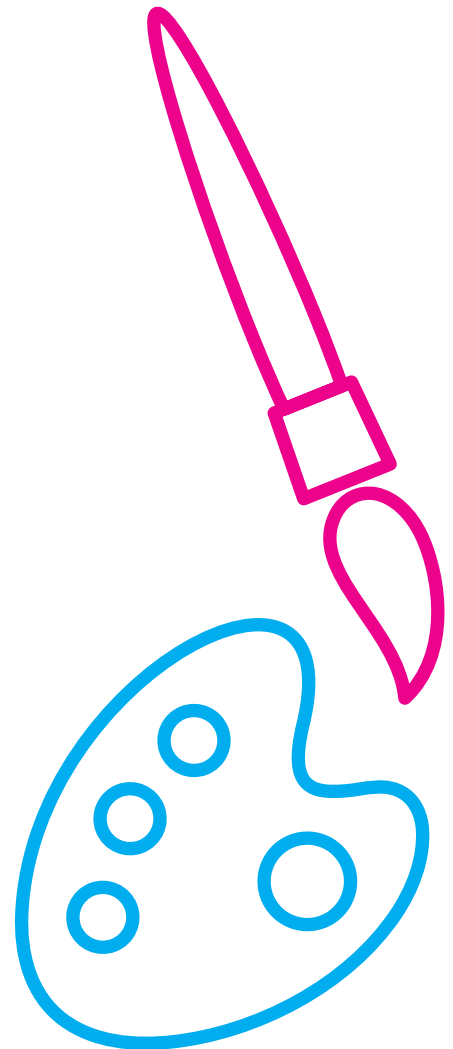
- 431 Underglaze
- 432 Glaze
- 433 Wheel/hand built
- 434 Exhibitor's Choice

## SECTION K: EXHIBITOR'S CHOICE

- 435 Exhibitor's Choice

## SECTION L: FAIR THEME

- 436 "Nights, Lights, and Bites"



# DEPARTMENT V: PHOTOGRAPHY

## Rules:

1. PLEASE READ AND FOLLOW ALL GENERAL RULES AT THE BEGINNING OF THIS GUIDE.
2. All prints must be solely the work of the exhibitor.
3. THERE IS A MAXIMUM OF THREE (3) PRINTS TOTAL PER INDIVIDUAL FOR THIS DEPARTMENT. NO ONE INDIVIDUAL IS PERMITTED TO ENTER MORE THAN THREE ENTRIES IN PHOTOGRAPHY.
4. All entries must not exceed 16"x 20" including mat. Due to space limitations, size limits are strictly enforced. Small prints shall be a maximum of 8" x 10" and large prints shall be a maximum of 16" x 20" inches.
5. Prints must be mounted on a thin piece of poster board or heavy construction paper. No over mats, no double mats, no foam board, and no frames or glass. Pushpins and/or clips will be used to display photos, damage to the mats may occur.
6. Attach the title of each photo and entry tag so that the tag hangs over the front top right corner of the photo. If necessary, indicate the top of the photo with an arrow on the back of the mat.
7. Classes with fewer than 3 entries will be combined with other classes.
8. Monochrome prints are defined as prints having no more than two colors, monochrome plus one other color.
9. Hand colored prints or prints with more than one color (hue) added are considered color prints.
10. "Human interest" is defined as an image depicting a person or persons in an interactive, emotional or unusual situation, excluding sports action.n.

## Judging Based Upon:

Technique, overall impact, creativity, composition, lighting and suitability of the image to the class.

### SECTION A: LARGE MONOCHROME PRINTS

- 500 Landscape (views of natural inland scenery)
- 501 Architecture and Design
- 502 Animals and Nature
- 503 Creative
- 504 Human Interest

### SECTION B: LARGE COLOR PRINTS

- 505 Landscape (views of natural inland scenery)
- 506 Architecture and Design
- 507 Animals and Nature
- 508 Creative
- 509 Human Interest

### SECTION C: SMALL MONOCHROME PRINTS

- 510 Landscape (views of natural inland scenery)

- 511 Architecture and Design
- 512 Animals and Nature
- 513 Creative
- 514 Human Interest

### SECTION D: SMALL COLOR PRINTS

- 515 Landscape (views of natural inland scenery)
- 516 Architecture and Design
- 517 Animals and Nature
- 518 Creative
- 519 Human Interest

### SECTION E: OTHER

- 520 Exhibitor's Choice

### SECTION F: FAIR THEME

- 521 "Nights, Lights, and Bites"

# DEPARTMENT VI: HERBS, FRUITS, NUTS & VEGETABLES

## Rules:

1. PLEASE READ AND FOLLOW ALL GENERAL RULES AT THE BEGINNING OF THIS GUIDE.
2. The correct number of items per class must be submitted. The number is indicated after the Class name (e.g. "Tomato, small fruited, 6").
3. All varieties in a class must be the same. If possible, please specify variety on the entry tag.
4. All vegetable, fruit and nut entries MUST be on a 6" or 9" white disposable plate, with the exception of the vegetable baskets.
5. The Fair reserves the right to remove the tops from "root crops" for attractive display.
6. All Herb entries are to consist of 3 sprays or spikes, except as noted. Maximum specimen height of 12".
7. Herb entries must be in a clear plastic cup no larger than 10 oz.; except Potted "Window Box" type Herb Garden entries.
8. "Largest" specimens are to be of the finest quality.

### SECTION A: HERBS SUBSECTION 1: ANNUAL/ TENDER PERENNIAL

- 600 Basil, green leaf
- 601 Basil, purple leaf
- 602 Dill
- 603 Flowers, edible, any variety, 3
- 604 Garlic, with stems, 2 bulbs
- 605 Marjoram
- 606 Any variety not listed above

### SUBSECTION 2: PERENNIAL

- 607 Chamomile
- 608 Chives, 5 leaf blades
- 609 Feverfew
- 610 Lavender
- 611 Lemon Balm
- 612 Mint, any variety
- 613 Oregano
- 614 Parsley
- 615 Rosemary
- 616 Sage

- 617 Tansy
- 618 Tarragon
- 619 Thyme
- 620 Any variety not listed above

### SUBSECTION 3: HERB COLLECTIONS

- 621 Annual Collection - a mixed bunch of annual herbs, 3 or more varieties, total of 9 stems/ sprays, in a clear plastic cup (no larger than 10 oz.)
- 622 Perennial Collection - a mixed bunch of perennial herbs, 3 or more varieties, total of 9 stems/sprays, in a clear plastic cup (no larger than 10 oz.)

### SECTION B: FRUITS AND NUTS

- 623 Apples, 3

- 624 Berries, any variety, 6
- 625 Figs, 3
- 626 Grapes, 1 bunch
- 627 Peaches, 3
- 628 Peanuts in the shell, 6
- 629 Pears, 3
- 630 Plums, 3
- 631 Any other fruit or nut not listed above.

### SECTION C: BASKETS

- 632 Basket of Fruit, Vegetables, and/or Nuts, 8 or more kinds, no props, plain baskets only. Individual entries.

### SECTION D: VEGETABLES

- 633 Beans, dried, shelled, any variety, 25 beans
- 634 Beans, fresh, shelled, any variety, 25 beans
- 635 Beans, Green, 8 pods
- 636 Beans, Other, 8 pods
- 637 Beets, any variety, 3

## Judging Based Upon:

Absence of insect damage and soil; size, form, and color typical of variety; and uniformity.



## DEPARTMENT VI: HERBS, FRUITS, NUTS & VEGETABLES (cont'd)

- 638 Cabbage, any variety, 1 head  
639 Carrots, with tops, 5  
640 Corn, Indian, husks tied back, 3  
641 Corn, Popcorn, husks removed, 3  
642 Corn, Sweet, husks removed, 3  
643 Cucumbers, Pickling, under 4" long, 3  
644 Cucumbers, slicing, over 4" long, 3  
645 Eggplant, 1  
646 Greens, any variety, 5 leaves  
647 Jerusalem Artichokes, 3 tubers  
648 Leeks, entire plant, 3  
649 Melon, any variety, 1  
650 Mushrooms, 3  
651 Okra, 5 pods  
652 Onions, any single variety, minimum size 2", 3, stems removed
- 653 Oriental vegetable, leafy, 1 head or 5 leaves  
654 Oriental vegetable, root, 3  
655 Oriental vegetable, other, same quantity as standard varieties  
656 Peas, dried shelled, 25 peas  
657 Peas, any variety, 5 pods  
658 Peppers, Hot, any single variety, 3  
659 Peppers, Sweet, any single variety, lobe-end, 3  
660 Peppers, Sweet, any single variety, tapered end, 3  
661 Potatoes, Irish, any single variety, 3  
662 Potatoes, Sweet, 3  
663 Pumpkin, 1  
664 Shallots, 3, stems on  
665 Summer Squash, Green (includes Zucchini), 2
- 667 Summer Squash, Yellow, 2  
668 Summer Squash, any single variety, 2  
669 Winter Squash, any single variety, 2  
670 Sunflower Seedhead, 1  
671 Tomatoes, Italian paste type, any color, 3  
672 Tomatoes, Heirloom variety, any color, 3  
673 Tomatoes, Large, any color, 3  
674 Tomatoes, Small fruited, under 2", any color, 6  
675 Heirloom Vegetables/Old Fashioned varieties, (identify variety) same quantities as standard varieties  
676 Largest Potato, 1  
677 Largest Pumpkin, 1  
678 Largest Tomato, 1
- 679 Largest Squash, 1  
680 Tallest Cornstalk, 1  
681 Novelty Vegetable, any pleasingly malformed vegetable, 1  
682 Any variety not listed above, 2

### SECTION E: COLLECTIONS

- 683 Summer Vegetable Collection, 4 types, 1 of each kind (e.g. Cucumber, Eggplant, Corn, Pepper, Tomato, etc.)  
684 Root Vegetable Collection, 4 types, 1 of each kind (e.g. Carrot, Beet, Potato, Radish, Onion, etc.)  
685 Gourd Collection, 4, all different varieties

### SECTION F: OTHER

- 686 Exhibitor's Choice

## DEPARTMENT VII: FLOWERS, ARRANGEMENTS & POTTED PLANTS

### Rules:

- PLEASE READ AND FOLLOW ALL GENERAL RULES FROM PAGES 2 AND 3 IN THIS GUIDE. Entries must be by individual exhibitors; no groups or clubs are allowed.
- All entries in SECTIONS A, B, C and D must be in a 10 to 16 oz., non-returnable clear plastic or glass bottle. Marbles or pebbles may be placed in the bottle for stability. Foliage or blossom should NOT rest on the neck of the bottle. Cotton or bubble wrap may be placed in the bottleneck to position stem or flower. Specimen should be groomed: This means INSECTS and DEAD, DISEASED OR DAMAGED LEAVES REMOVED AND HEALTHY FOLIAGE LEFT ON the specimen. If in doubt, leave the foliage intact, but never in the water. The Fair has a limited supply of bottles.
- One specimen per container for SECTIONS A, B, C and D.
- SECTION A: SINGLE BLOSSOM FLOWER: flower must be disbudded, leaving only one bloom and healthy foliage intact, BUT NEVER IN THE WATER.
- SECTION B: MULTIPLE BLOSSOM FLOWER: flowers are spike, raceme, panicle, umbel, cyme, or corymb forms. A single floret is not allowed.
- Maximum height and width for SECTIONS A, B, C, and D: 18" from the neck of the bottle.
- Potted plants (SECTION E) must have been in exhibitor's care since March 31, 2019. Maximum container size is 10" diameter. Plants cannot exceed 24" in width and 24" in height.
- Flower arrangements can be informal or formal. List materials used on a 3" by 5" card that must be attached to the entry.
- Arrangements must be firmly in place. NO rearrangement of plant material may be made by the exhibitor once the arrangement has been entered. Dried specimens MUST be fully dried. Arrangements are NOT to exceed 24" wide and 24" tall, with the container no larger than 8" tall. No leaves in the water. No sprayed or dyed leaves or flowers.
- NO invasive plants may be entered.
- Entrant may provide a mirror not to exceed 5" to assist in display.

### Judging Based Upon:

SECTION A-D: Condition, form, size, color and freedom from blemishes. Leaves should be clean and foliage groomed, dead or damaged

leaves removed, healthy foliage left intact.

SECTION E: Cultural perfection, symmetry of form, balance of pot and plant, foliage condition, freedom from blemishes, and grooming.

SECTION F: Color harmony, overall design, condition, container suitability, and originality..

### SECTION A: SINGLE FLOWER BLOSSOMS

- 700 Coneflower, any color  
701 Coreopsis  
702 Cornflower  
703 Cosmos, single or double  
704 Dahlia, less than 3"  
705 Dahlia, greater than 3"  
706 Daisy, single or double  
707 Marigold, under 1"  
708 Marigold, 1" to 3"  
709 Marigold, over 3"  
710 Nasturtium  
711 Rose, miniature  
712 Rose, single specimen  
713 Rudbeckia  
714 Scabiosa  
715 Strawflower  
716 Sunflower  
717 Zinnia, under 1"  
718 Zinnia, 1" to 3"  
719 Zinnia, greater than 3"

# DEPARTMENT VII: FLOWERS, ARRANGEMENTS & POTTED PLANTS (cont'd)

- 720 Annual not listed above
- 721 Perennial not listed above
- 722 Heritage Flowers, old fashioned varieties (identify variety)

## SECTION B: MULTIPLE FLOWER BLOSSOMS

- 723 Achillea (Yarrow)
- 724 Ageratum
- 725 Asclepias
- 726 Begonia
- 727 Canna
- 728 Celosia, Crested
- 729 Celosia, Plumed
- 730 Daylily
- 731 Dianthus
- 732 Gladiolus
- 733 Impatiens, any color foliage, with blossom, may be rooted in water
- 734 Lantana
- 735 Petunia, double
- 736 Petunia, single
- 737 Rose, spray
- 738 Salvia, Blue
- 739 Salvia, Red or other color
- 740 Sedum
- 741 Snapdragon
- 742 Sunflower, multi stemmed variety
- 743 Annual not listed above
- 744 Perennial not listed above
- 745 Heritage flowers, old fashioned varieties (identify variety)

## SECTION C: FLOWERING PLANTS GROWN FOR FOLIAGE

- 746 Amaranthus
- 747 Artemisia
- 748 Coleus, Fringe Leaved
- 749 Coleus, Standard Leaved
- 750 Decorative Grass Stalk
- 751 Any variety not listed above

## SECTION D: SPECIMEN BRANCHES

- 752 Aucuba
- 753 Boxwood
- 754 Conifer
- 755 Crape Myrtle
- 756 Deciduous Branch
- 757 Hydrangea
- 758 Ilex (Holly)
- 759 Magnolia
- 760 Mahonia
- 761 Pyracantha
- 762 Flowering Shrub/Tree, must be in flower

## SECTION E: POTTED PLANTS

### SUBSECTION 1: FOLIAGE PLANTS

*Grown primarily for leaves and do not have to be in bloom at time of entry.*

- 763 Begonia
- 764 Bonsai
- 765 Bromeliad
- 766 Cactus
- 767 Caladium
- 768 Coleus
- 769 Dish Garden, minimum 3 different varieties
- 770 Fern
- 771 Hanging Basket
- 772 Jade Plant
- 773 Peperomia
- 774 Sansevieria
- 775 Succulent
- 776 Specimen Foliage or Topiary
- 778 Foliage Specimen plant not listed above.

### SUBSECTION 2: BLOOMING PLANTS

*These are grown for their bloom and must be in flower at time of entry.*

- 779 African Violet
- 780 Begonia
- 781 Geranium
- 782 Hanging Basket
- 783 Hibiscus
- 784 Impatiens
- 785 Orchid
- 786 Blooming Specimen plant not listed above.

## SECTION F: FLOWER ARRANGEMENTS

### SUBSECTION 1: HOME GROWN FLOWERS AND PLANT MATERIALS

- 787 “Mother Nature’s Best”—a mixture of native flowers and plants. Plant list available online at [www.vnps.org](http://www.vnps.org) and at the Arlington County Office of the Virginia Cooperative Extension Service.
- 788 “In the Pink” – an all pink flower arrangement
- 789 “Fireworks” – interpretive design using summer flowers
- 790 Minimum of 3 types of annuals
- 791 Minimum of 3 types of perennials
- 792 All dried arrangement
- 793 Miniature A – maximum height and width 7”, including container
- 794 Miniature B – maximum height and width 4”, including container
- 795 “Pollinators’ Heaven” – must contain 3 or more samples of pollinators’ favorites, such as Sunflower, Rudbeckia, Salvia, Zinnia, Coneflower, Cosmos, Lantana, etc.
- 796 FAIR THEME – A flower arrangement in any style which clearly reflects the 2021 Fair Theme. There are no color restrictions.

### SUBSECTION 2: COMMERCIALLY GROWN FLOWERS AND PLANT MATERIALS

- 797 “Mother Nature’s Best” – a mixture of native flowers and plants. Plant list available online at [www.vnps.org](http://www.vnps.org) and at the Arlington County Office of the Virginia Cooperative Extension Service.
- 798 “In The Pink” – an all pink flower arrangement
- 799 “Fireworks” – interpretive design using summer flowers
- 800 Minimum of 3 types of annuals
- 801 Minimum of 3 types of perennials
- 802 All dried arrangement
- 803 Miniature A – maximum height and width 7”, including container
- 804 Miniature B – maximum height and width 4”, including container
- 805 “Pollinators’ Heaven” – must contain 3 or more samples of pollinators’ favorites, such as Sunflower, Rudbeckia, Salvia, Zinnia, Coneflower, Cosmos, Lantana, etc.

### SECTION G: OTHER

- 806 Exhibitor’s Choice

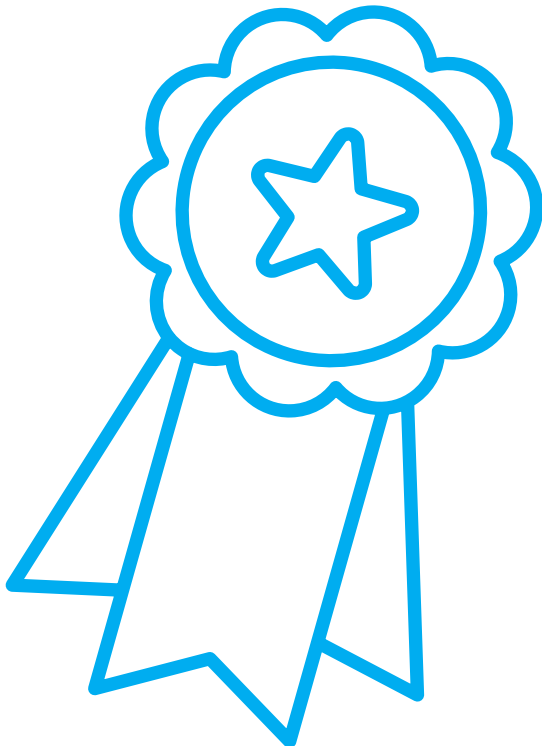


# DEPARTMENT VIII: EDUCATIONAL EXHIBITS

## Rules:

An educational display stimulates thought, teaches facts, or shows a process. It may result in action on the reader's part. The educational display is to take the form of a tabletop display. Displays have less than 60 seconds to get their message across. The display may include sound, motion, etc.

1. PLEASE READ AND FOLLOW ALL GENERAL RULES AT THE BEGINNING OF THIS GUIDE.
2. Table Displays - Tri-folds (24" x 36")
3. Exhibit is not to extend beyond the height or width of the display board/tri-fold.
4. Exhibit is able to extend to the edge of the table (depth) within the width and height of the display board/tri-fold
5. Exhibits are judged against a standard as defined on the scorecard C0679 (7/02).
6. They are not judged in competition with one another.
7. There are no Section categories so awarding will follow Department awarding within each Age division as listed in the General Rules.



Educational Exhibits Display Score Card	
<b>DESIGN</b>	<b>40 POINTS</b>
<b>Color</b>	
Pleasing to the eye	5 points
Effectively used	3 points
<b>Lettering</b>	
Easily read	5 points
Style suitable to message	2 points
<b>Illustration</b>	
Part of message or just eye catching	5 points
<b>Layout</b>	
Simple and orderly	5 points
Organization of parts	2 points
Good spacing	3 points
Neatness	5 points
Reflects planning	5 points

<b>ORIGINALITY, CREATIVITY, AND NEATNESS</b>	<b>20 POINTS</b>
Shows imagination	10 points
New idea or innovative way to present familiar one	10 points

<b>EDUCATION VALUE</b>	<b>40 POINTS</b>
One main idea	10 points
Message effectively and accurately presented	10 points
Message elicits viewer response	10 points
Message appropriate for intended audience	5 points
Chart/graph is titled	5 points

<b>TOTAL</b>	<b>80 POINTS</b>
--------------	------------------

### Breakdown of Points

Blue 80 - 65  
 Red 64 - 40  
 White 39 - 1